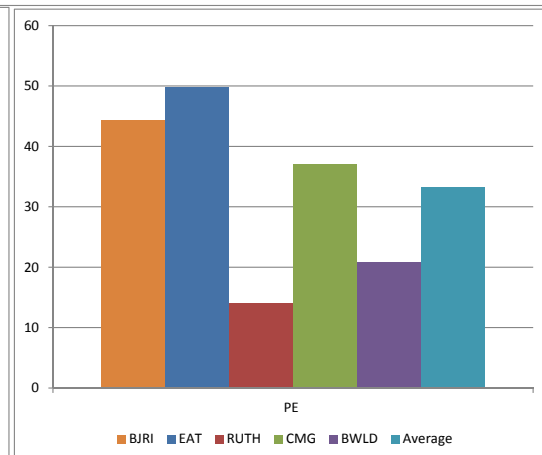
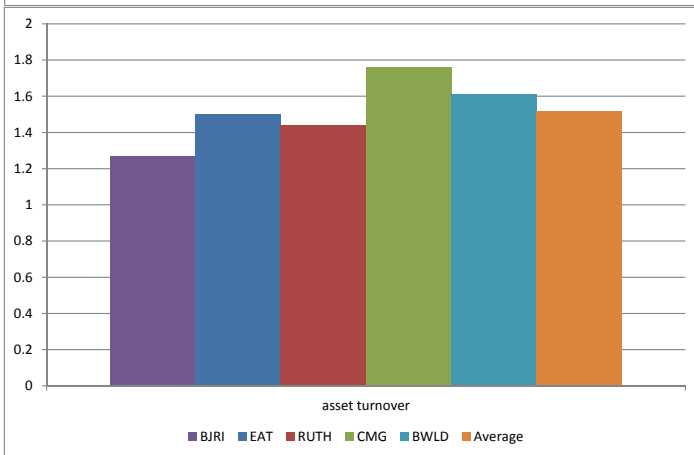
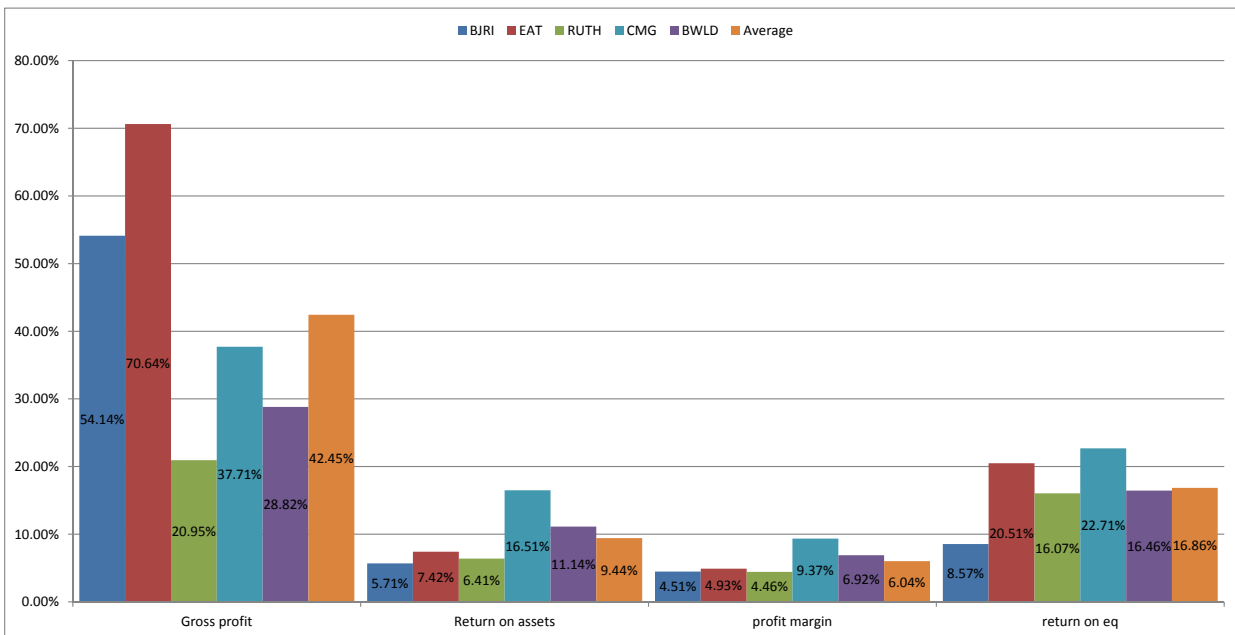


Companies	Gross profit	Return on assets	profit margin	asset turnover	return on eq	PE
BJRI	54.14%	5.71%	4.51%	1.27	8.57%	44.29
EAT	70.64%	7.42%	4.93%	1.5	20.51%	49.71
RUTH	20.95%	6.41%	4.46%	1.44	16.07%	14
CMG	37.71%	16.51%	9.37%	1.76	22.71%	37.11
BWLD	28.82%	11.14%	6.92%	1.61	16.46%	20.78
Average	42.45%	9.44%	6.04%	1.516	16.86%	33.178



Companies	Rank - GP	Rank - ROA	Rank - PM	Rank - AT	Rank - ROI	Rank - PE	Total
BJRI	4	1	2	1	1	4	13
EAT	5	3	3	3	4	5	23
RUTH	1	2	1	2	2	1	9
CMG	3	5	5	5	5	3	26
BWLD	2	4	4	4	3	2	19

Company	Risk Rank	Profit Rank		BJRI	EAT	RUTH	CMG	BWLD
BJRI	16	13	Risk	16	21	21	5	12
EAT	21	23	Profit	13	23	9	26	19
RUTH	21	9						
CMG	5	26						
BWLD	12	19						

